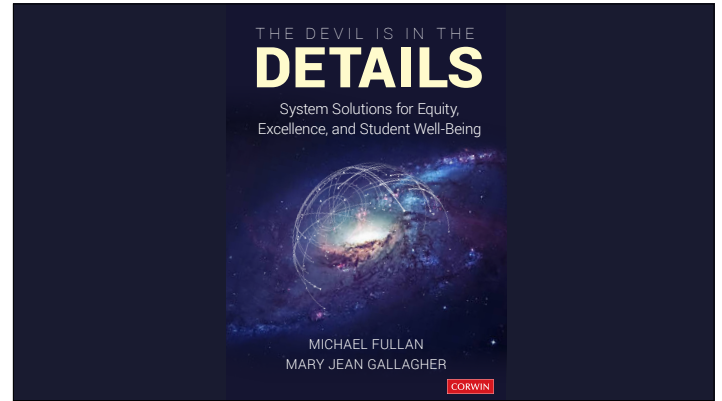
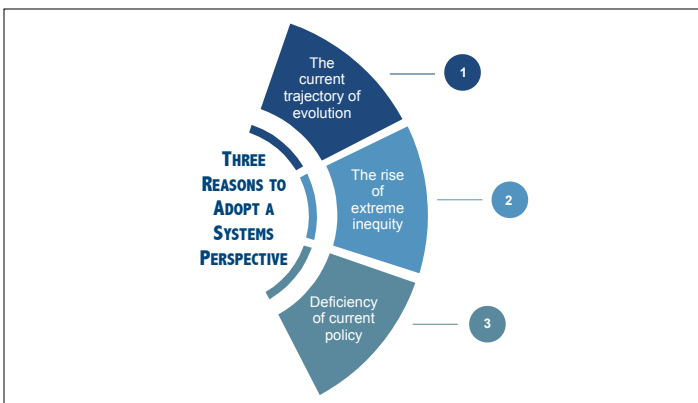


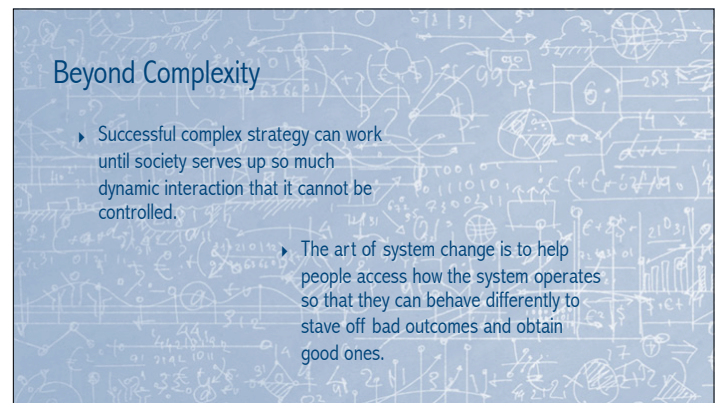
1



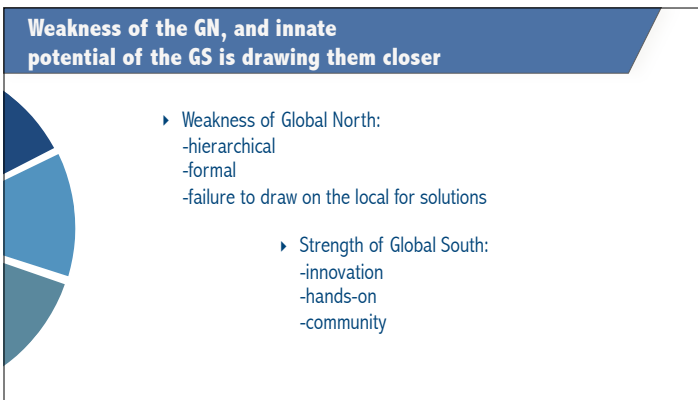
2



3



4



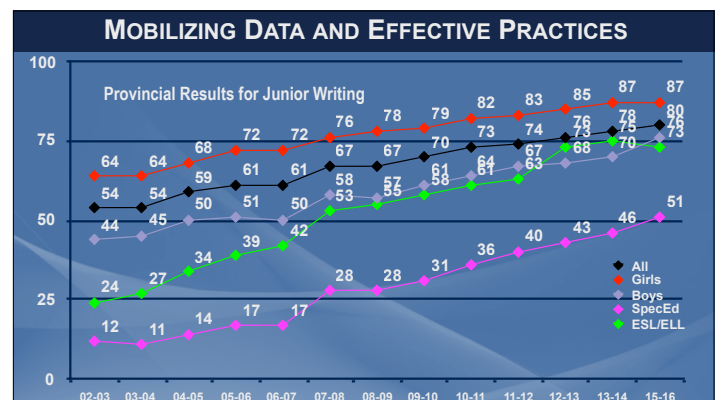
5



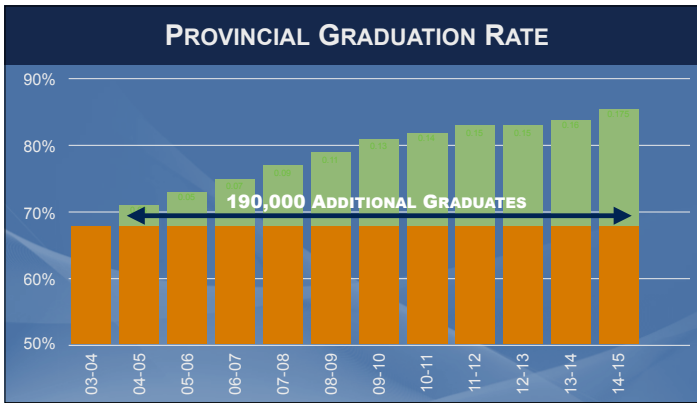
6



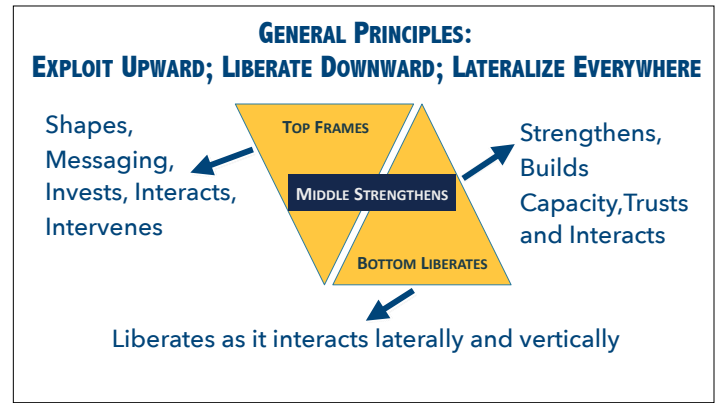
7



8



9



10

### Examples from the Middle

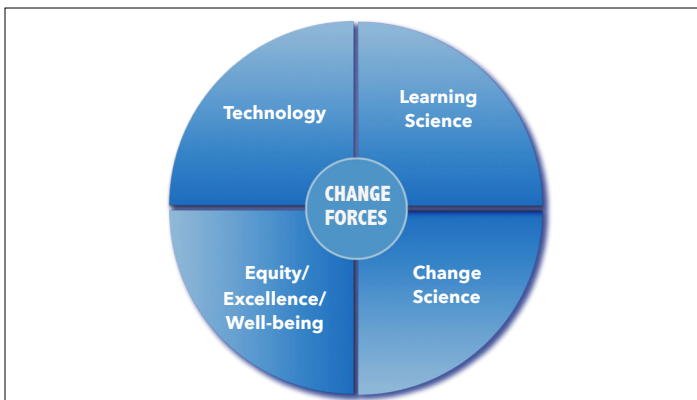
- ▶ Eldorado County, CA
- ▶ Ottawa Catholic School Board, ON

11

### Transition Time

- ▶ System is short-changing the majority of students
- ▶ Teachers are unfulfilled
- ▶ State testing is wrong

12



13



14

### WHAT IS DEEP LEARNING?

- **Quality learning that sticks with you the rest of your life**
- **Learning that Engages the World Changes the World**

**New Pedagogies for Deep Learning**  
A GLOBAL PARTNERSHIP

15

### Defining the Six Global Competencies for Deep Learning

Deep Learning is the process of acquiring the six global competencies

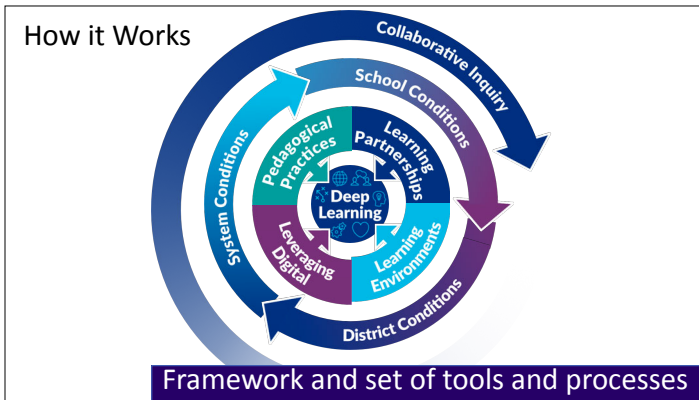
<b>Character</b> <ul style="list-style-type: none"> <li>Proactive stance toward life and learning to learn</li> <li>Grit, tenacity, perseverance and resilience</li> <li>Empathy, compassion and integrity in action</li> </ul>	<b>Communication</b> <ul style="list-style-type: none"> <li>Communication designed for audience and impact</li> <li>Message advocates a purpose and makes an impact</li> <li>Reflection to further develop and improve communication</li> <li>Voice and identity expressed to advance humanity</li> </ul>
<b>Citizenship</b> <ul style="list-style-type: none"> <li>A global perspective</li> <li>Commitment to human equity and well-being through empathy and compassion for diverse values and world views</li> <li>Genuine interest in human and environmental sustainability</li> <li>Solving ambiguous and complex problems in the real world to benefit citizens</li> </ul>	<b>Creativity</b> <ul style="list-style-type: none"> <li>Economic and social entrepreneurialism</li> <li>Asking the right inquiry questions</li> <li>Pursuing and expressing novel ideas and solutions</li> <li>Leadership to turn ideas into action</li> </ul>
<b>Collaboration</b> <ul style="list-style-type: none"> <li>Working interdependently as a team</li> <li>Interpersonal and team-related skills</li> <li>Social, emotional, and intercultural skills</li> <li>Managing team dynamics and challenges</li> </ul>	<b>Critical Thinking</b> <ul style="list-style-type: none"> <li>Evaluating information and arguments</li> <li>Making connections and identifying patterns</li> <li>Meaningful knowledge construction</li> <li>Experimenting, reflecting and taking action on ideas in the real world</li> </ul>

**New Pedagogies for Deep Learning**  
A GLOBAL PARTNERSHIP

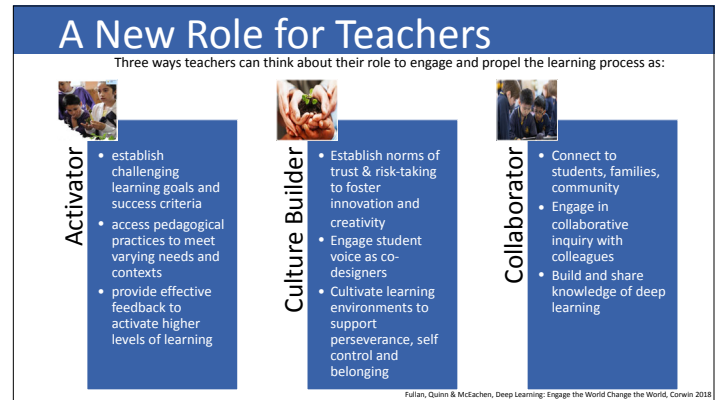
2

16





17



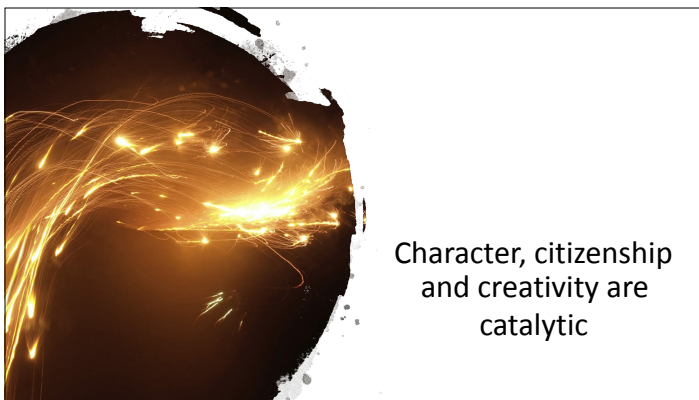
18



19



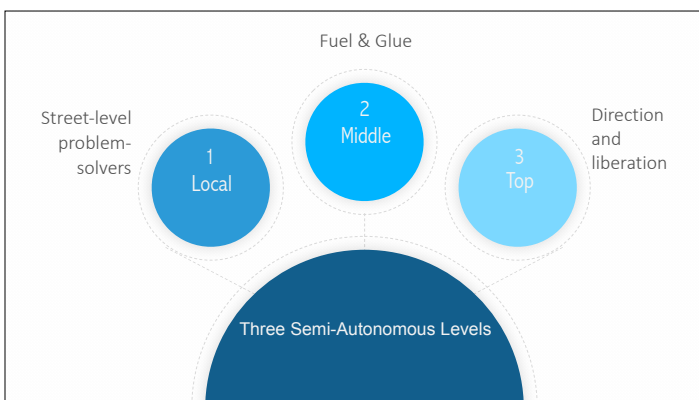
20



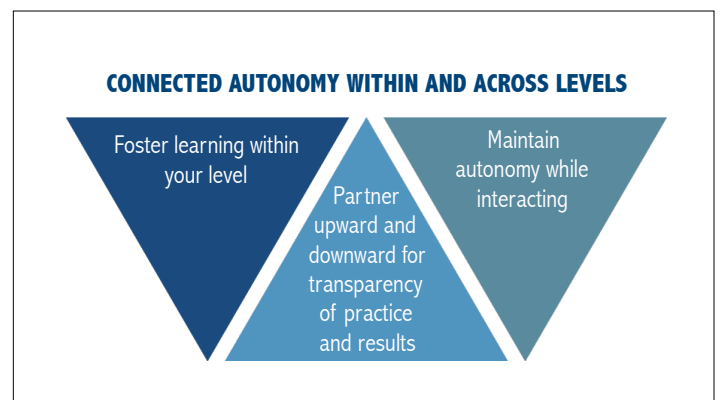
21



22



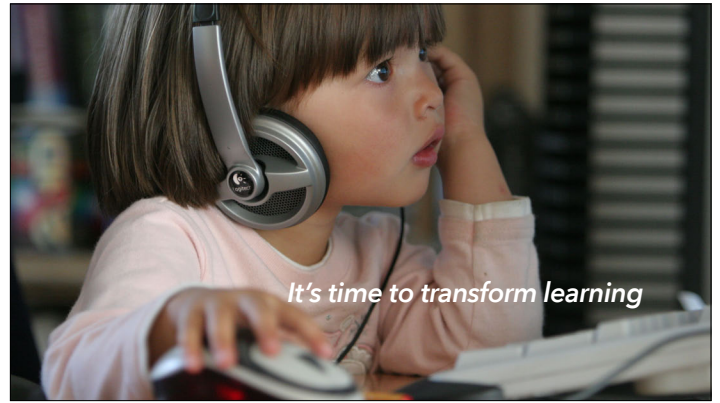
23



24



25



26